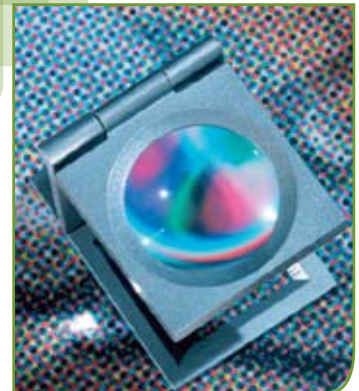




# EFI Colorproof™ XF

Managing Color in a New Dimension

Graphic Arts Solutions



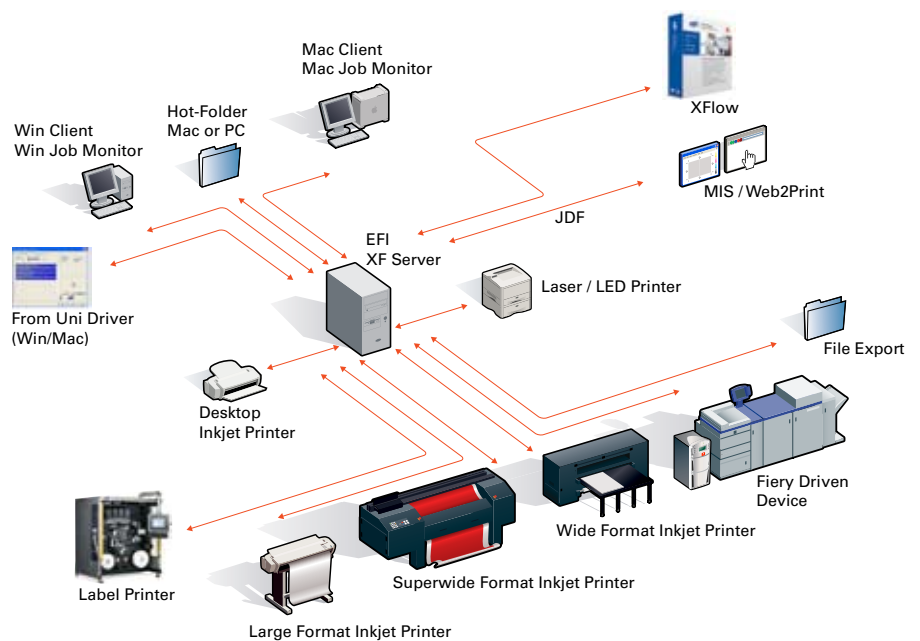
# Choose the Industry-Leading Cross-Platform Solution for Proofing to Produce High Quality Colour Every Time!

EFI Colorproof™ XF offers a professional-level RIP solution for graphic arts businesses that need to produce ISO 12647-7/8 compliant validation prints and contract proofs on inkjet, laser and LED printers. The solution offers you all the tools to manage your colour best and to master any proofing or printing task.

## Get Flexibility through a Modular, Cross Platform Solution

Colorproof XF's modular architecture allows you to customize the ICC compliant solution to meet your specific needs and operation size, whether you are doing proofing, photo or large-format production. The cross platform client/server application also is easy to set up, configure and use because of its application wizards and intuitive user interface. These tools allow you to easily manage each job, output configuration and location in a remote proofing environment.

## EFI Colorproof XF - One RIP for various applications.





### **Achieve Accurate Results Every Time with Breakthrough Colour Technology**

Colorproof XF comes with many features to ensure that you produce consistent and accurate colour every time.

For example, it provides you with all necessary tools to set up your whole system and environment perfectly or to let you optimize the colour quality of the included linearization/profile sets easily. In addition, its intelligent calibration features enable you to bring back your system to its original state.

With the cutting-edge spot colour simulation technique, Colorproof XF also creates spot colour simulations with challenging low Delta Es.

You also can harness EFI's patent-pending Dynamic Wedge™, a dynamically created control strip that shows jobs' key colours – including the spot colours - for verifying, and if required, optimizing their colour accuracy. The EFI Dynamic Wedge is perfectly suited for colour critical print jobs where a static wedge (e.g., Ugra/Fogra media wedge) does not reflect the key colours adequately or spot colours at all.

In addition, Colorproof XF offers full support of the latest printer technology with an embedded spectrophotometer that provides you with an automated workflow to maximize your productivity. The technology handles each step of the colour measurement process automatically from linearization, profiling, calibration, optimization and verification. It also enables you to print labels directly on the output.

### **Increase your Efficiency and Speed with Powerful Production Tools**

The solution offers production tools that transform your printer into a fast and efficient production device. These tools include functions such as tiling, step & repeat and colour adjustments. In addition, Colorproof's outstanding nesting capabilities lower your production costs dramatically by decreasing paper waste.

### **Supports Industry Standards for Greater Flexibility**

Colorproof XF is focused on supporting industry standards, so it can be easily integrated into open standard workflows. As a result, you can do tasks such as produce ICC compliant proofs according to ISO12647-7 or G7 or process PDF/X files or Pantone Goe spot colours. Colorproof XF also supports the latest technologies for streamlining and enhancing workflow communication such as the Adobe® PDF Print Engine.

### **Harness the Benefits of Remote Proofing with Integrated Technology**

The solution comes with integrated remote proofing technology to easily set up remote proofing workflows. It ensures consistent proof results at any location in your remote environment. Combined with the latest printers, the embedded spectrophotometers also allow you to profit from the most efficient remote proofing workflow ever. Speed up your production and save your money on expensive courier services.

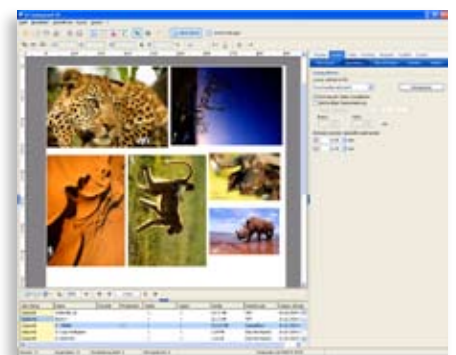
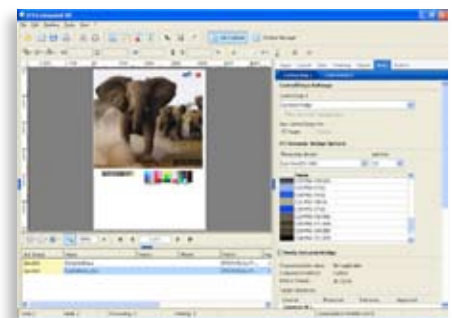
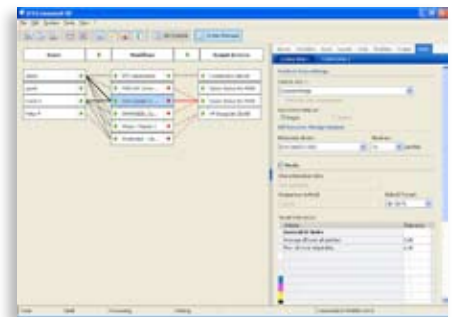
If you want to only do processing, printout and verification of remote proofing jobs, than choose the affordable EFI Colorproof XF Satellite. The solution only supports the Remote Proofing Format (RPF) as the input format and already includes the Color Verifier Option.

### **Streamline Workflow Using Other Leading EFI Solutions**

Colorproof XF integrates with other EFI™ solutions to meet your current and future printing needs. Now, you can streamline your production process, increase your productivity, and save money by avoiding redundant steps using EFI Print MIS and Web-to-Print solutions via a JDF connector.

### **Delivers Solutions for the Entire Colour Supply Chain**

Coupled with other EFI solutions, Colorproof XF is the answer to your challenges with the Colour Supply Chain – the end-to-end process of producing good colour from creative design to production and output. The benefits include faster execution, reduced costs and consistent corporate colours.










Cost-effective and efficient: Colorproof XF's workflow based job processing, the Dynamic Wedge and the integrated nesting function.

## XF Components





### Colorproof XF Basic Package

Provides high-performance proofing and print functions including linearization tools. The Basic Package consists of Colorproof XF Server, an unlimited number of Client Options and a Printer Option M.

#### Product options

- 
**Color Manager Option:** Provides ICC-based tools for professional creation of ICC and device link profiles
- 
**Color Verifier Option:** Verify the quality and reliability of your printouts through measuring and comparing colour values against ISO or own quality standards
- 
**Dot Creator Option:** Output contone data as screened prints or proofs to simulate the AM screening characteristics of the final run
- 
**OneBit Option:** Proof the screening of the final run by using the screen data created by the filmsetter or platesetter RIP
- 
**Production Option:** Transform the large-format / wide format printer into a fast and efficient production device by functions such as tiling, step & repeat, colour adjustment and clean color
- 
**Spot Color Option:** Enables simple processing and true-colour output of jobs with spot colours. Colour libraries for Pantone, HKS and HKS 3000 Plus, Toyo and DIC are included
- 
**Japanese Font Option:** Benefit from the integrated font download and additional Japanese characters

#### Output options

- 
**Printer Options M, XL and XXL:** Supports a wide range of inkjet, LED and laser printers of various printer vendors; depending on the size of your printer:  
 Printer Option M for up to 18" or A2  
 Printer Option XL for 24" printers  
 Printer Option XXL for printers bigger than 24"
- Dedicated Printer Options:**  
**Printer Option VUTEK** for EFI VUTEK printers  
**Printer Option Rastek** for EFI Rastek printers  
**Printer Option OKI** for OKI printers  
**Printer Option Special** for Mimaki UJF-605
- 
**Fiery Option:** Output of colour managed files on xerographic devices driven by external and embedded Fiery controllers
- 
**File Export Option:** Export colour managed TIFF and PDF files
- 
**Gravure Option:** Create separated greyscale TIFFs for digital engraving of gravure cylinders

Detailed information on the individual options can be found on the relevant data sheets. Find out more at [www.efi.com](http://www.efi.com).



## Print to win with EFI

EFI ([www.efi.com](http://www.efi.com)) is the world leader in customer-focused digital printing innovation. EFI's award-winning solutions, integrated from creation to print, deliver increased performance, cost savings and productivity. The company's robust product portfolio includes Fiery® digital color print servers; VUTEK® superwide digital inkjet printers, UV and solvent inks; Jetrion® industrial inkjet printing systems; print production workflow and management information software; and corporate printing solutions. EFI maintains 26 offices worldwide.